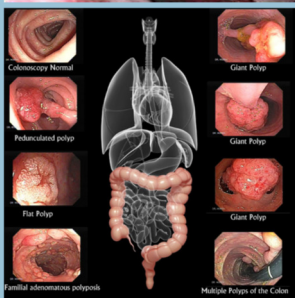
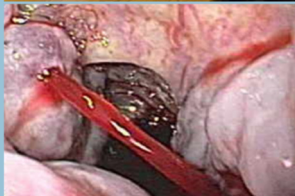


**THE
QUEENSLAND
GASTROENTEROLOGY
EDUCATION
PROGRAM:**

A UNIQUE
INITIATIVE FOR
ADVANCED
TRAINEES IN QLD

**Background &
Purpose**

- Structured curriculum tailored to filling the gaps in advanced training in GE and liver disease
- Sessions focus on what trainees need to know with consultant support
- Great opportunities to ask specific questions
- GE teaching designed to formally address advanced training requirements
- Opportunities for special lectures and sessions involving other disciplines and professionals



Contact:

Aiden Lyon
GE Trainee Representative
PA Hospital
or
jayne.kidd@e-kiddna.com.au

The QGEP

The Qld Gastroenterology Education Program was developed as a formal 2-year rolling curriculum complementing hospital-based advanced training. It covers the spectrum of GE and Liver disease that is encountered in core training through a series of case-based, consultant-mentored teaching sessions that are teleconferenced to every teaching hospital from Cairns to the Gold Coast.

Year One Curriculum

- Introduction to the QGEP (Year 1)
- GI bleeding emergencies
- Acute severe colitis
- Acute liver failure
- Non-bleeding GI emergencies
- Non-alcoholic fatty liver disease update
- Oesophageal & motility disorders
- Transitioning paediatric to adult care
- IBD in pregnancy
- Liver disease in pregnancy
- Helicobacter and peptic ulcer disease
- Investigating and managing iron deficiency
- Snare and electrocautery in endoscopy
- CR cancer: guidelines and screening
- Drug-induced liver disease
- Other viral hepatitis: HAV/HEV/EBV/CMV
- Peri-anal Crohn's disease
- Neuroendocrine disorders in GE
- Immunosuppression in IBD
- Difficult-to-control UC
- Cholestatic liver diseases
- Palliative care in GE & Hepatology
- Hereditary and familial CR cancer
- End-stage liver disease
- Systemic disease and the liver
- Hepatitis C
- GI Radiology: Common pathology
- Genetics and IBD pathophysiology
- Cystic fibrosis and GE/Liver disease
- Coeliac disease

Year Two Curriculum

- Introduction to the QGEP (Year 2)
- Barrett's oesophagus
- Coagulopathy in GE & Liver disease
- Obscure GI bleeding: VCE & enteroscopy
- Irritable bowel syndrome
- Managing decompensated cirrhosis
- Interpreting the liver biopsy
- Pancreatic masses and solid lesions
- Developing an approach to diarrhoea
- Non-infectious and non-IBD colitis
- Colorectal surgery for gastroenterologists
- Autoimmune liver disease: AIH, PBC and PSC
- Managing stomas and pouchitis
- Haemochromatosis and iron overload
- Hepatitis B
- Obstructive jaundice and malignancy
- Crohn's disease: case-based approaches
- Approaches to vomiting and nausea
- Ascending cholangitis and pancreatitis
- Eosinophilic oesophagitis
- Functional dyspepsia
- Anorectal disease: fistulae, fissures, abscesses
- HCC versus benign liver lesions
- Vascular disorders of the liver
- Parenteral nutrition
- Enteral nutrition
- Oesophageal cancer
- Hepatobiliary surgery for gastroenterologists
- Gastro-oesophageal reflux disease
- Alcohol-related liver disease

The QGEP was designed to be dynamic and responsive to the needs of trainees in Queensland. If you have useful feedback or would like to suggest a topic that is not currently part of the curriculum, please contact the GESQ Advanced Trainee Representative. The program is yours and we value your input!